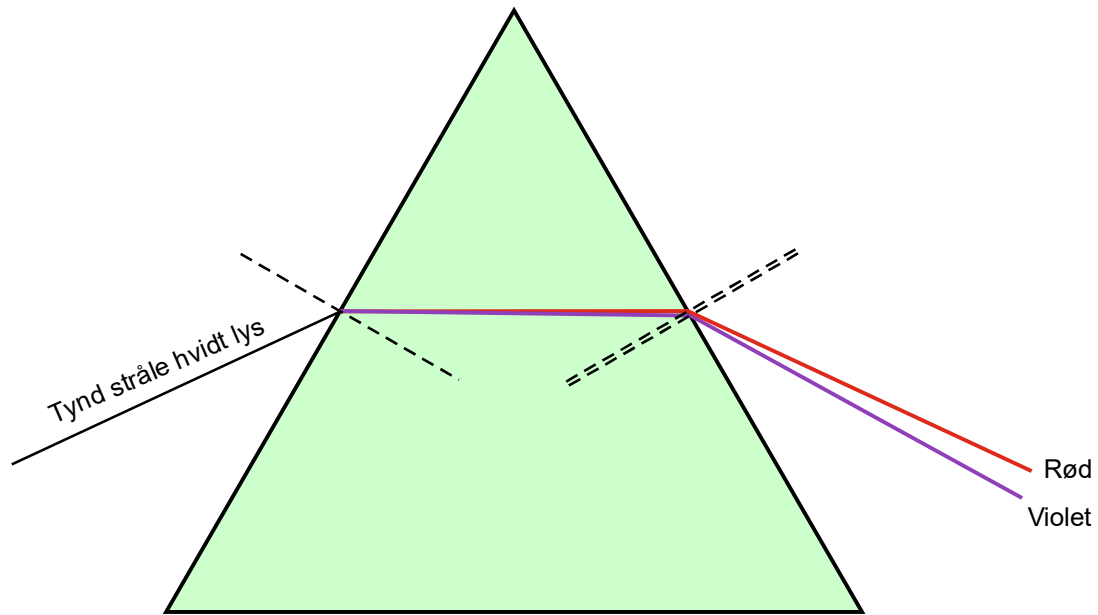


Brydning & Optik – eksempler

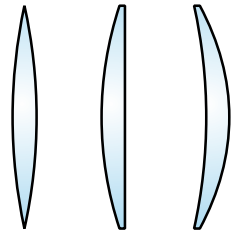
Brydning i prisme

Tynd stråle af hvidt lys brydes i forskellige farver

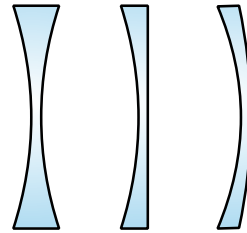


Samle og spredelinser

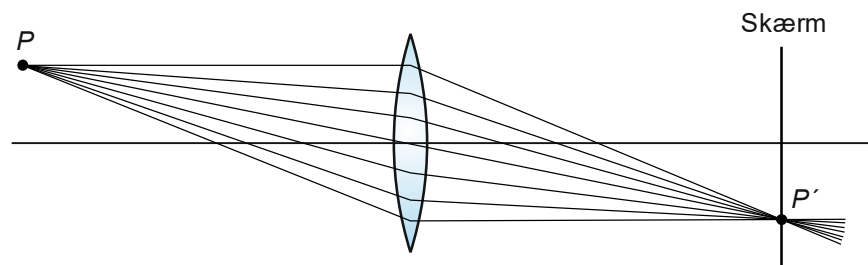
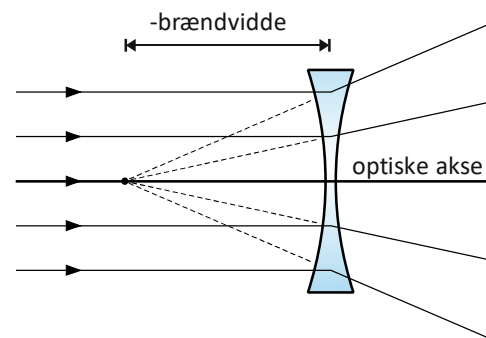
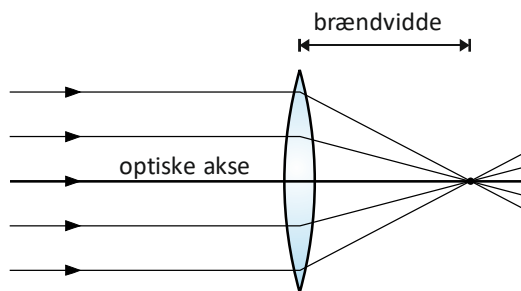
Lysets brydning i forskellige linser



Samlelinser

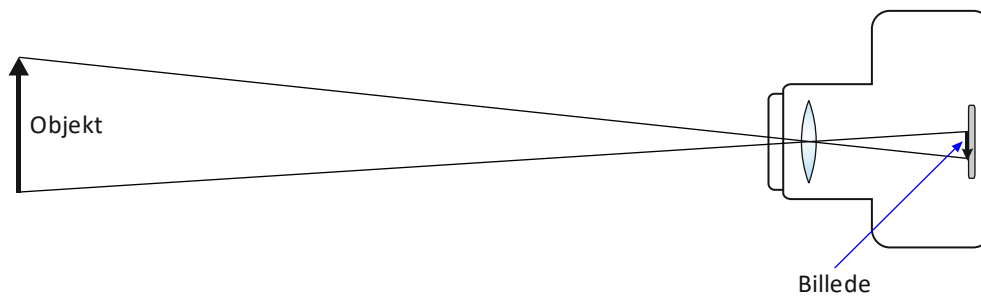


Spredelinser



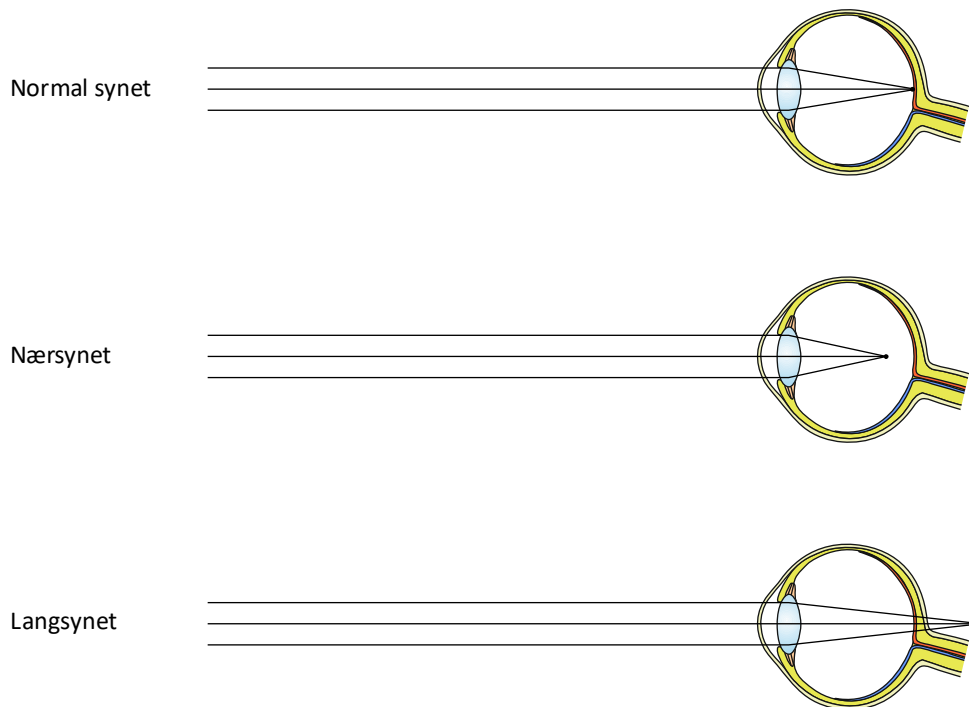
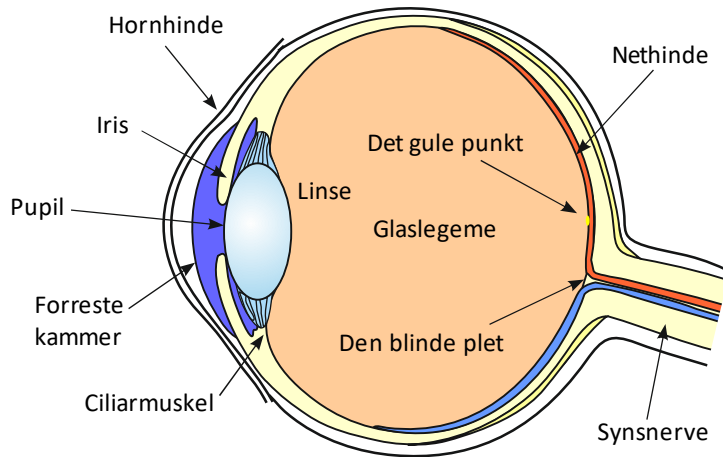
Kamera

Billede af objekt på sensor - meget simplificeret



Øjet

Normalsynet – nærsynet – langsynet

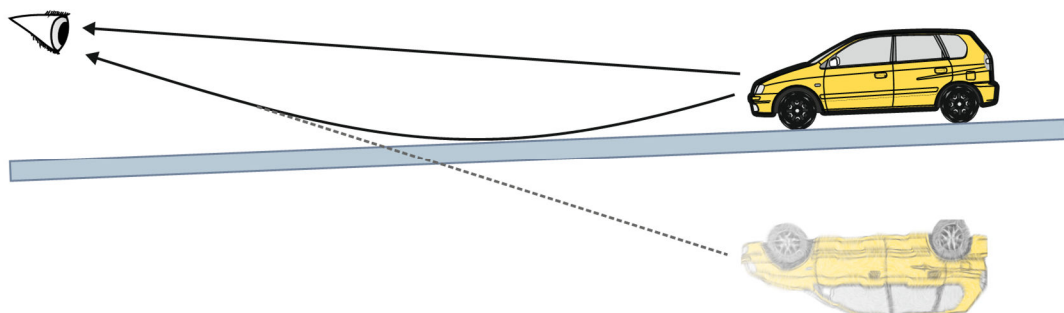


Fatamorgana - luftspejling

Forskellige temperaturer i forskellige luftlag giver anledning til brydning og et virtuelt billede



©iStock.com/Prill



Regnbuen

Lyset reflekteres i en regndråbe

